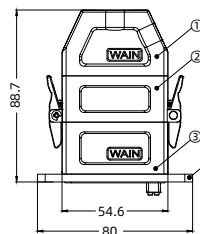


## Metal enclosure for single module(EMC)-PUSH LOCK

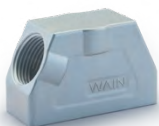


## Component

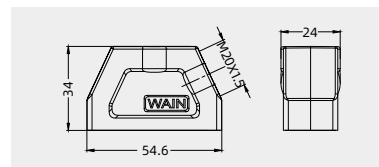
- ① Hood with top or side entry;
- ② Carrier hood with locking device;
- ③ Housing, bulkhead mounted;
- ④ Mounting plate.

## Hoods/Housings

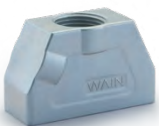
## Hoods, side entry



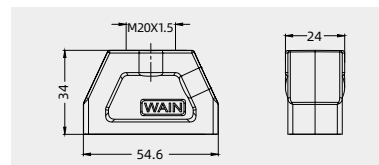
Thread	Designation	Order No.
M20	EMC.H1M.WU-SE-M20	129 001 590 1102



## Hoods, top entry



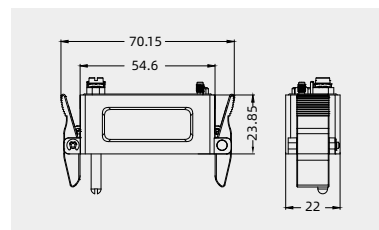
Thread	Designation	Order No.
M20	EMC.H1M.WU-TE-M20	129 001 490 1102



## Carrier hood



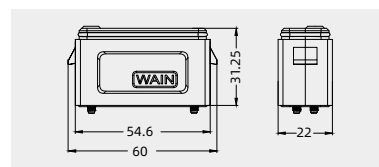
Thread	Designation	Order No.
---	EMC.H1M.WU-MBK-2L	129 001 340 1001



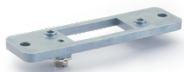
## Bulkhead mounted housings



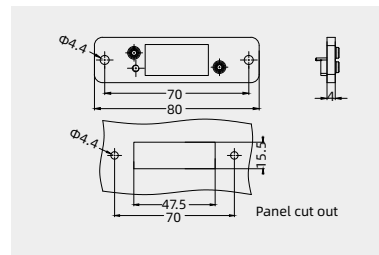
Thread	Designation	Order No.
---	EMC.H1M.WU-BK	129 001 300 1001



## Mounting plate



Thread	Designation	Order No.
---	EMC.H1M.WU-MP	129 001 000 1101



## Coding element



Thread	Designation	Order No.
for Carrier hood Male	CODE-Q7M	198 002 005 0007
for Housings Female	CODE-Q7F	198 002 005 0008

